

Introduction

EdgeMarc Series converged network appliances are a new generation of edge device that enable real-time, interactive IP services. They simplify the managed VoIP environment by acting as a demarcation point at the customer premises for VoIP services. The 4200 is a low-cost, easy to use appliance that was specifically designed for small to medium enterprise deployment and provides:

- **VoIP Application Layer Gateway (SIP, MGCP, H.323 & SCCP)** – Enables a single public IP address to be used for multiple IP phones or IADs. Resolves NAT/FW traversal issues.
- **Traffic management including call admission control** – Prioritizes voice over data traffic to ensure toll quality voice calls while allowing data traffic to burst up to full line rate when possible.
- **Voice and data firewall** – uses stateful packet inspection for data & tracks VoIP signaling states to dynamically provision ports and protect the LAN.
- **VoIP Survivability** – provides local station to station call switching when Softswitch is unavailable.
- **Call quality monitoring** – provides passive call quality monitoring and statistics including minimum MOS, average MOS, jitter, latency, packet loss and many others for troubleshooting, trend analysis and pro-active monitoring of VoIP calls.

The 4200 is the ideal small to medium enterprise solution for converged IP voice and data networks and delivers:

- Significant cost savings
- Comprehensive security
- Guaranteed voice quality
- Simplified management

Save

The 4200 provides a significant reduction in total cost of ownership over competing solutions. It also reduces IP address costs by enabling a single public WAN IP address to be used for multiple IP devices on the LAN. Finally, its "Plug 'n Dial" capabilities reduce installation times significantly - often paying for itself after the first day of use!

Secure

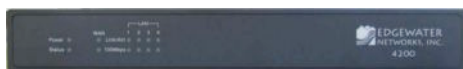
The 4200 includes a state-of-the-art voice and data firewall and NAT server to hide private IP addresses. The firewall couples knowledge of VoIP signaling with traditional packet filtering to dynamically open and close ports and ensure that only authorized voice and data traffic reaches the protected LAN.

Traffic Management

The QoS provided by the 4200 is designed to ensure high priority real time voice traffic is processed before lower priority data traffic. At the same time, bandwidth not in use by voice traffic is made available so that data traffic can burst up to full line rate making efficient use of WAN bandwidth. QoS mechanisms are applied to traffic in both the upstream (LAN to WAN) and downstream (WAN to LAN) direction to support all types of broadband links including ADSL. It also provides call admission control functionality to prevent calls in-progress from being affected by new calls when bandwidth is limited.

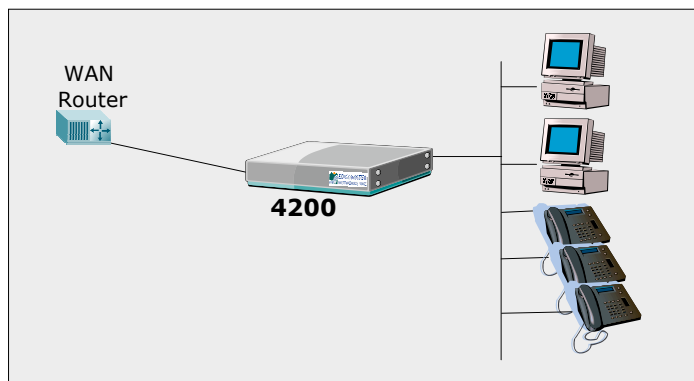
Simplify

The 4200 replaces multiple standalone systems and provides comprehensive remote management and testing features. It serves as the demarcation point between the WAN and LAN facilitating problem resolution at the edge by providing familiar IP test tools (eg. traceroute, ping, etc.) and MOS data for call quality metrics. It also includes many functions that automate the configuration of IP phones, IADs and multi-media devices to simplify installation.

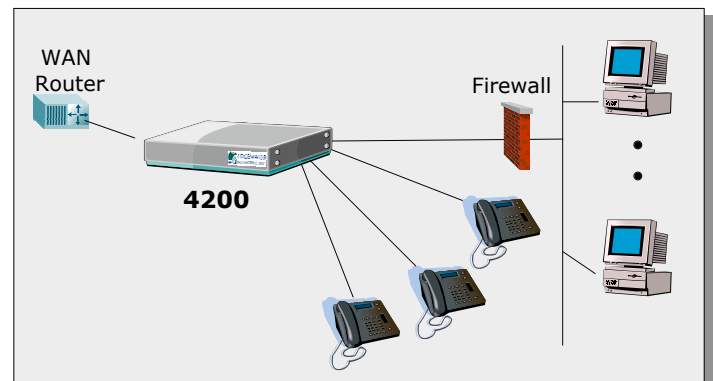


SUGGESTED CONFIGURATIONS

All-in-One Solution



Installed With Existing Infrastructure



Specifications

WAN Ports	1x10/100 Ethernet
LAN Ports	4x10/100 Ethernet
Serial Ports	1xRS-232 (DB9)
Dimensions	Width = 9 3/16" (233mm) Depth = 5 3/4" (146mm) Height = 1 2/16" (27mm)
Weight	1 lb. (500g)
LEDs	Power, Status, WAN/LAN port activity, 100Mbps
Power	5V 3A
Warranty	1 Year



Back View

Ordering Information

Part Number	4200 Series Description
EM-4200-02	EdgeMarc 2 WAN call license
EM-4200-05	EdgeMarc 5 WAN call license
EM-4200-10	EdgeMarc 10 WAN call license
EM-4200-30	EdgeMarc 30 WAN call license

Features

Firewall	Packet Inspection with support for SIP, MGCP, H.323 and SCCP
Traffic Shaping	Dynamically prioritizes real-time traffic
Diffserv Marking/Policing	TOS bit setting for high priority traffic
Application Layer Gateway	Supports voice/video NAT for SIP, MGCP, H.323 and SCCP
DHCP	Server and Client
NAT	Static and Dynamic
NTP	Client
Performance	Up to 30 concurrent WAN calls
Call Admission Control	Generates busy signal for calls over maximum specified level
Graphical User Interface, CLI	HTTP or HTTPS, SSH or telnet
Phone Management	FTP and TFTP pass through, Plug 'n Dial
SNMPv1, V3	MIBII (RFC1213)
Call Quality Monitoring	Minimum MOS, average MOS, jitter, packet loss, latency and much more
Survivability	Local station to station call switching upon WAN link failure (SIP only)