

Introduction

EdgeMarc Series Converged network appliances are a new generation of edge device that enable real-time, interactive IP services. They simplify the managed VoIP environment by acting as a demarcation point at the customer premise for VoIP services. The 5300 Series appliances are designed for medium to large enterprise deployment and provide:

- **VoIP Application Layer Gateway (SIP, MGCP, SCCP & H.323)** – Enables a single public IP address to be used for multiple IP phones or IADs
- **Traffic management** – Prioritizes voice over data traffic to ensure toll quality voice calls while allowing data traffic to burst up to full line rate when possible
- **Voice and data firewall** – uses stateful packet inspection for data & tracks VoIP signaling states to dynamically provision ports and protect the LAN
- **VoIP Survivability** – provides local station to station call switching when the Softswitch is unavailable
- **Call quality monitoring** – provides passive call quality monitoring and statistics including minimum MOS, average MOS, jitter, latency, packet loss and many others for troubleshooting, trend analysis and pro-active monitoring of VoIP calls
- **Optional integrated T1 CSU/DSU** – terminates the WAN link and provides a tightly integrated solution

5300 Series appliances are the ideal solution for converged IP voice and data networks and deliver:

- Significant cost savings
- Comprehensive security
- Guaranteed voice quality
- Simplified management



Save

5300 Series appliances provide a significant reduction in total cost of ownership over competing solutions. They also reduce IP address costs by enabling a single public WAN IP address to be used for multiple IP devices on the LAN. Finally, their “plug and play” capabilities reduce installation times significantly – often paying for themselves after the first day of use!

Secure

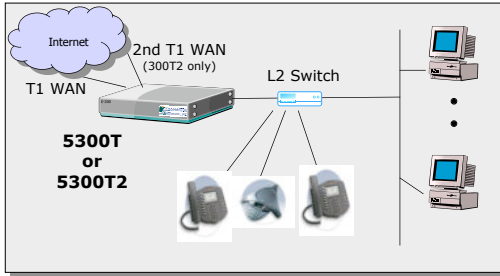
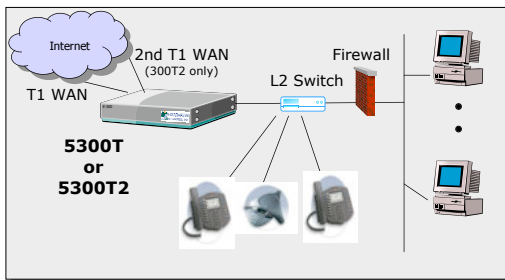
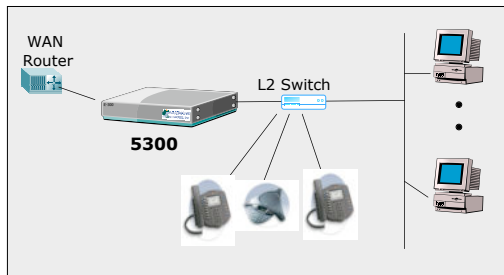
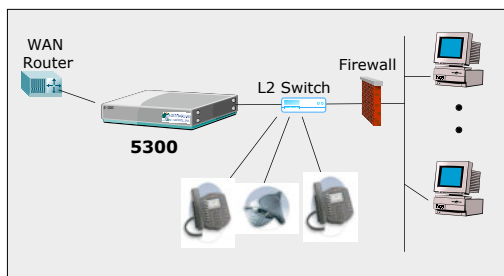
Each 5300 Series appliance includes a state-of-the-art voice and data firewall and NAT server to hide private IP addresses. The firewall couples knowledge of VoIP signaling with traditional packet filtering to dynamically open and close ports and ensure that only authorized voice and data traffic reaches the protected LAN.

Shape

The QoS provided by the 5300 Series is designed to ensure high priority real time voice traffic is processed before lower priority data traffic. At the same time, bandwidth not in use by voice traffic is made available so that data traffic can burst up to full line rate making efficient use of WAN bandwidth. QoS mechanisms are applied to traffic in both the upstream (LAN to WAN) and downstream (WAN to LAN) direction. They also provide call admission control functionality to prevent calls in-progress from being affected by new calls when bandwidth is limited.

Simplify

Each 5300 Series appliance replaces multiple standalone systems and provides comprehensive remote management and testing features. They serve as the demarcation point between the WAN and LAN facilitating problem resolution at the edge by providing familiar IP test tools (eg. traceroute, ping, etc.) and MOS data for call quality metrics. They also include many functions that automate the configuration of IP phones, IADs and multi-media devices to simplify installation.

SUGGESTED CONFIGURATIONS
All-In-One Solution

Installed With Existing Infrastructure

Installed With Existing WAN Termination

Installed With Existing WAN Termination & Infrastructure

Specifications

WAN Port	5300: 1x10/100/1000 Ethernet 5300T: 1xT1 CSU/DSU 5300T2: 2xT1 CSU/DSU
LAN Port	1x10/100/1000 Ethernet
T1 WAN	T1/E1—RJ 45 Connector, Integrated CSU/DSU Full T1/E1
Management Ports	1xRS-232 Serial, 1x10/100 Ethernet
Dimensions	19" Rack Mount, 1RU
Weight	11.5 lbs.
Power	100/240v VAC, manual selecting, 47 to 63 Hz
Warranty	1 Year

Features

Firewall	Packet Inspection with support for SIP, MGCP, SCCP and H.323
Traffic Shaping	Dynamically prioritizes real-time traffic
Diffserv Marking/Policing	TOS bit setting for high priority traffic
Application Layer Gateway	Supports voice/video network address translation for SIP, MGCP, SCCP and H.323 devices
NAT	Static and Dynamic
Performance	Up to 300 concurrent calls
Call Admission Control	Generates busy signal for calls over maximum specified level
Management	Web-based GUI, SNMP, SSHv2, SNMPv3, telnet
Passive Call Quality Monitoring	Minimum MOS, average MOS, jitter, packet loss, latency and much more
Phone Management	FTP and TFTP relay
Survivability	Local station to station call switching upon WAN link failure (SIP only)