



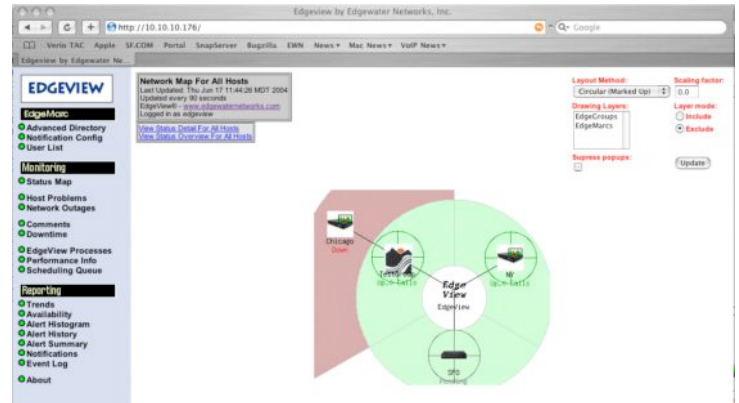
Edgewater Networks, Inc. EdgeView Element Management System

The EdgeView element management system is an important component of Edgewater's complete VoIP infrastructure solution. It enables service providers and enterprise customers to easily monitor and scale their VoIP service offerings through the central management of Edgewater's EdgeMarc and EdgeProtect Series products.

Critical functions provided by EdgeView include:

- The ability to perform image management and group upgrades for multiple nodes
- The ability to backup and restore the configuration for multiple nodes
- Active call count on a node by node basis
- The ability to launch a console management session with individual nodes
- Extensive trend analysis and statistics reporting for items such as uptime, utilization, etc.
- Node inventory and tracking information
- Nested group functionality for a hierarchal view of network topology
- Color-coded node and group status information
- Optional E-mail notification of node down events
- The ability to create multiple user accounts with different access level privileges

Delivered in an appliance form factor EdgeView is simple to setup and configure. Typically installed in the operations center, access to the EdgeView console is provided through a browser-based GUI that can be launched from any workstation, PC or management console. Access to this console is authenticated to ensure only authorized personnel are able to access individual nodes. Edgeview also provides a scripting interface for maximum flexibility that can be used to integrate with other NMS systems or automate repetitive tasks.



Key Features

- Image management and group upgrades for EdgeMarc appliances
- EdgeMarc configuration backup/restore
- Active call count reporting by node
- Node and group status information
- Trend analysis and reporting

For more information on the EdgeView element management system please contact us via email at info@edgewaternetworks.com or visit our website at www.edgewaternetworks.com